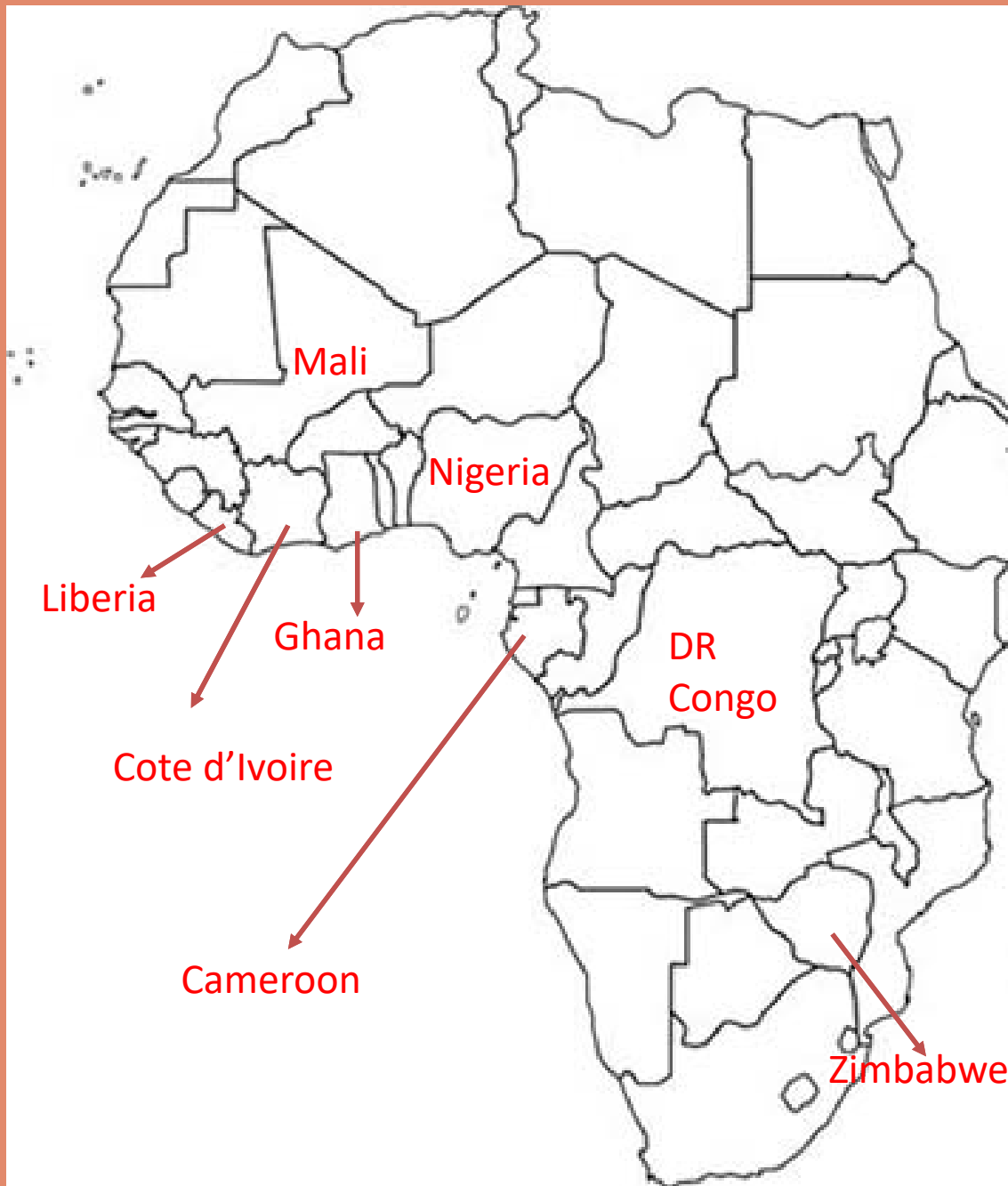


Africa

1100-1980 C.E.



Mali = 168

Liberia = 175

Cote d'Ivoire = 174

Ghana = 170

Nigeria = 169, 176,
180

Cameroon = 178, 179

DR Congo = 171, 172,
173, 177

Zimbabwe = 167

Mali

168. Great Mosque of Djenné



H: 33ft.
W: 246ft.
L: 246 ft.



Mali
Founded c. 1200 C.E.
Rebuilt 1906-1907
Adobe

Monday market at the Great Mosque



Theme: Religious Spaces



Liberia

175. Bundu mask



Sande Society, Mende people
West African forests of
Sierra Leone and Liberia
19th to 20th century C.E.
Wood, cloth, fiber
16in x 9.5in x 10in

Bundu Mask (Contextual Photograph)



Theme: Art for Performance



Cote d'Ivoire

174. Portrait mask (Mbulo)



Baule peoples
Cote d'Ivoire
Early 20th century C.E.
Wood and pigment
14 inches high

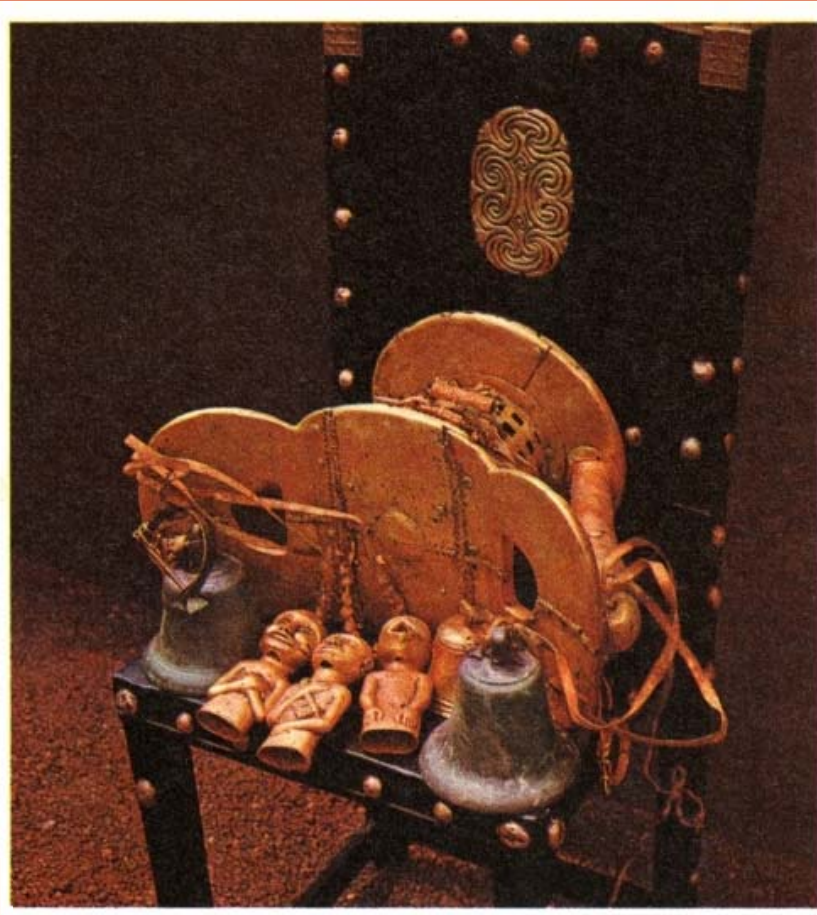
Mblo (Contextual Photograph)



Theme: Portrait

Ghana

170. Sika dwa kofi (Golden Stool)



Ashanti peoples
south central Ghana
c. 1700 C.E.
Gold over wood and
cast-gold attachments

curved seat 18in high
platform 24in wide
and 12in deep

Sika dwa kofi (Contextual photograph)



Theme: Relic
Sacred Object



Nigeria

169. Wall Plaque, from Oba's Palace



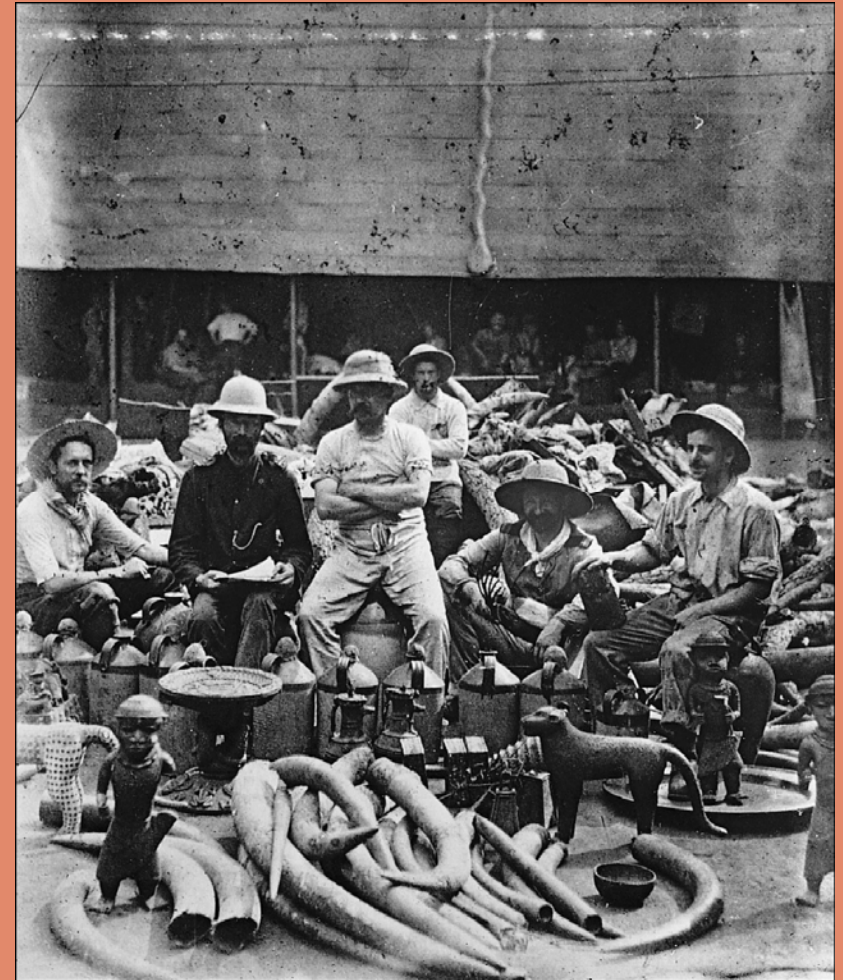
Edo peoples
Benin (Nigeria)
16th Century C.E.
Lost Wax Cast Brass

H. 19.5in
W. 16.5in
D. 4in.



Theme: Metalwork





Oba of Benin (Contextual photograph)



176. Ikenga (shrine figure)



Igbo peoples
Nigeria
c. 19th and 20th century C.E.
Wood
Vary from 11 – 20 inches high

Theme: Carved in the Round



180. Veranda Post of Enthroned King and Senior Wife (Opo Ogoga)



Olowe of Ise
Youruba peoples
Nigeria
c. 1910-1914 C.E.
Wood and Pigment
71in x 12in x 16in.

Theme: Multi-figure Work
Royalty and Court





Cameroon

178. Aka Elephant Mask



Bamileke

Cameroon, western grassfields region
c. 19th to 20th century C.E.

Wood, woven raffia, cloth, and beads
58in x 21in x 11in

2

Aka elephant mask (Contextual photograph)



Theme:
Art for Performance



179. Reliquary figure (byeri)



Fang Peoples
Southern Cameroon
c. 19th to 20th century CE
Wood
23in high

Theme: Guardian Figure





Democratic Republic of Congo

171. Ndop (portrait figure) of King Mishe maMbul



Kuba peoples
Democratic Republic of Congo
c. 1760-1780 C.E.

Wood
19in x 9in

Theme: Power and Authority

Ndop (Contextual photograph)



172. Power figure (Nkisi n'kondi)



Kongo peoples
Democratic Republic of Congo
c. Late 19th century C.E.
Wood and metal

36 inches high

Theme: Spiritual Power



173. Female (Pwo) mask



Chokwe peoples
Democratic Republic of the Congo
Late 19th to early 20th century C.E.
Wood, fiber, pigment, and metal
16 inches high

1

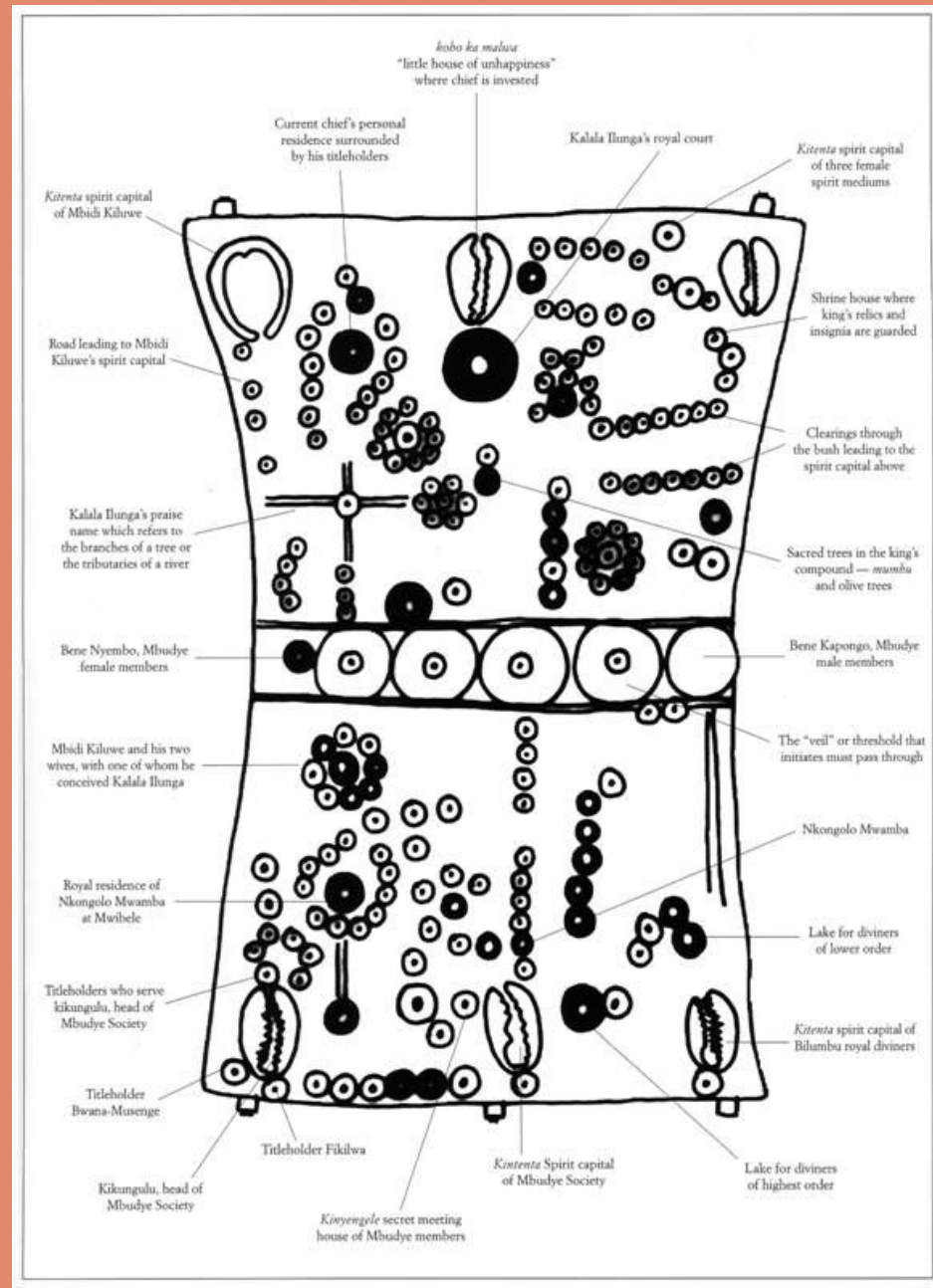
Theme: Art for Performance
Memory

177. Lukasa (memory board)



Mbudye Society, Luba peoples
Democratic Republic of the Congo
c. 19th to 20th century C.E.
Wood, beads, and metal
10in x 5in

Theme: Memory
Exotic Medium



Lukasa (Contextual Photograph)



Zimbabwe

167. Conical tower and circular wall of Great Zimbabwe

1700 acres

Walls =

800 feet long

32 feet high

17 feet thick

Conical tower =

30 feet high

18 feet diameter



Southeastern Zimbabwe

Shona peoples

c. 1000-1400 C.E.

Coursed granite blocks

167. Conical tower and circular wall of Great Zimbabwe



Theme:
City Planning
Ashlar Masonry





