

Global Contemporary

1980 C.E. to Present

224. The Gates

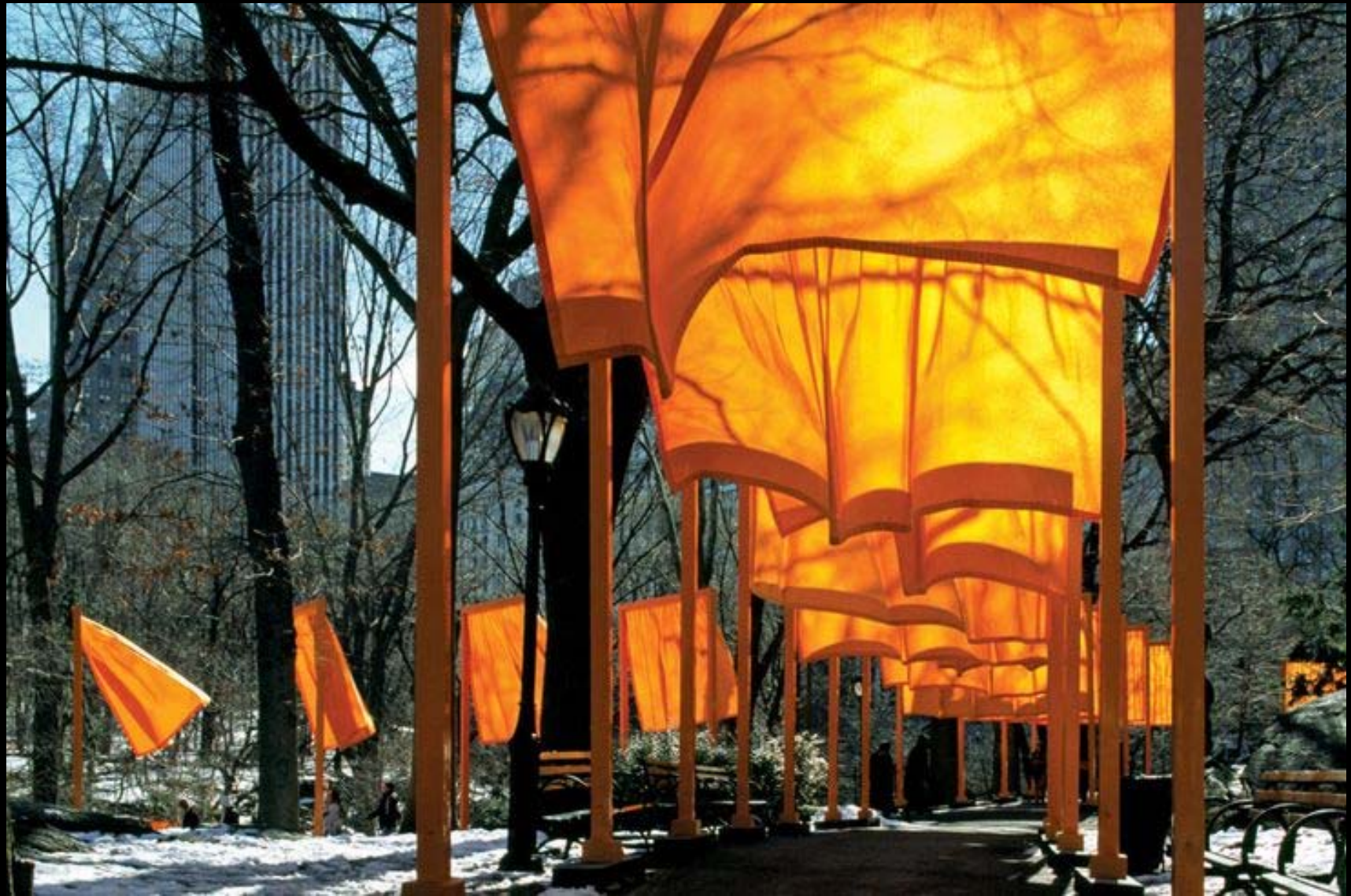


New York City, U.S.
Cristo and Jeanne-Claude
1979-2005 C.E.
Mixed-media installation



Over 7,500 gates
23 miles long
16 feet high
\$21 million dollars

Theme: Gates/Entrances
Circular Composition







Biscayne Bay



225. Vietnam Veterans Memorial



Washington D.C. U.S.

Maya Lin

1982 C.E.

Granite



Theme: Monochromatic
Memorial for the Dead



2 acres
58,000 names
10 feet high at center



...ROCK B - T DEMALINE - SAMUEL P - STEPHEN W - THOMAS J
WILKINS III - JAMES B - HEARON - ROBERT J - HENRY J - GUYTON
DLS Jr - BRADFORD S - MCKASSON - LEWELL G - HENRY J - GUYTON
SON C - BUCKLEY - TERENCE L - CARP - JOSEPH J - QUINN - JOHN
TILES - STANLEY G - TOLER - ROBERT P - ANDRES - RICHARD
IS T - DAI - DAVID C - DEWITT - THOMAS J - QUINN - JOHN
NZA G - ALLES - THOMAS D - GRANNELL - CAROL D - HARRIS - JOHN
NGAR P - HEINEN - CLAYTON - MICHAEL H - HARRIS - JOHN
OLINS - FREDWOOD F - NEAD P - JOHN F - O'CONNOR - THOMAS J
AM P - SIMMONS - JOSEPH F - TRULLO - ROYAL H - HARRIS - JOHN
ELER - FLOYD D - KING Sr - ROBERT L - BURK - PULLA V - K
IND P - SALZARULO Jr - EDWARD - ARBITER - VINI - ANGELO
UNTE - WILLIAM B - HALL Jr - MEVIN - THURMAN - HERB C - WINSO
RPEZ - WALTER S - MOONEY - EDWARD - LAMQUAN - ROBERT H - HARRIS
JEFFERS - GREGORY A - LECHON - MICHAEL G - HAMILTON - JOHN P - FRONZ
RANIER Jr - JAMES D - BASHALL - ANTHONY K - ROSI - RUD C - MARI
Z - SAMUEL L - KEMP - JENSEN - RUDOLPH - AG - PERSIN - ANTHONY - TARI
ARNOLD - WILLARD F - FRITZ - CARL - GUYTON - JAMES H - JOSE
L T - DEHBAUCH - CHARLES L - HARTLAND - MILLS S - MILL - PHILIP W - HARRIS
TROS - TOMMY - MORRIS - FRANK S - NYIA - WALTER - J - D
RRERA Jr - MICHAEL G - TANDY - JAMES E - WALLACE - HAMILTON
TGANG - W - KARASICH - RALPH D - CARTER - AUBRI - C - COOK - JAMES P - D
CILL Jr - WILLIAM J - GUILLET - JAMES A - BROWN - JAMES P - W
JSTON - KENNETH L - SCOTT - JAMES W - LEON - MICHAEL - J - D
DER L - BARNEY - JOHN M - SCOTT - GANNY - LEON - MICHAEL - J - D
BERING - ALLAN H - JORDAN - JEFFREY - F - JAMES - ARGANS - JOHN - S - W
DANAS G - RICHMOND - JEFFREY - F - JAMES - ARGANS - JOHN - S - W
IND F - THORNELL - THOMAS - CHAMSI - PAUL - GALLAGHER - JOHN - S - W
L - BEAM - CHARLES W - COPP - JIMMY - L - HARRIS - JOHN - S - W
RT - MICHAEL - R - GARDNER - JOHN E - PERRY - ALAN - S - W
R - CROSBLEY - DAVID - HALL - CONER - DAVID - PERRY - ALAN - S - W
INDO L - SOLIZ - STANLEY G - SPRAGUE - RICHARD - L - HARRIS - JOHN - S - W
ENCE - L - BORDEN - ROBERT E - HARRIS - JOHN - S - W
R - FINZER - EDWIN - R - HARRIS - JOHN - S - W
ARLES - LENARCONICZ - HARRY - L - HARRIS - JOHN - S - W
L - PHAMER - NELL - RILEY - JOHN - P - SUCRO - JOHN - S - W
LEY - EFRAIN - DEL - PESUS - CASPERAS - THOMAS - G - PULL - JOHN - S - W
JONES - HAROLD E - SMOLENSKI - ROBERT - HARRIS - JOHN - S - W
G - THRASHER - PHILIP - POLGAS - RACH - JOHN - S - W
...JOSEPH L - LAUREN - JOHN - S - W

226. Horn Players



Jean-Michel Basquiat
1983 C.E.

Acrylic and oil paintstick on three
canvas panels

96in x 75in





Theme: Multi-Panel Work

Picasso – Three Musicians



227. Summer Trees



Song Su-nam
1983 C.E.
Ink on paper
29in x 45in

Theme:
Color Theory
Nature
Ink Techniques

228. Androgyne III

48in x 63in x 22in

Theme:
Suffering
Human Figure

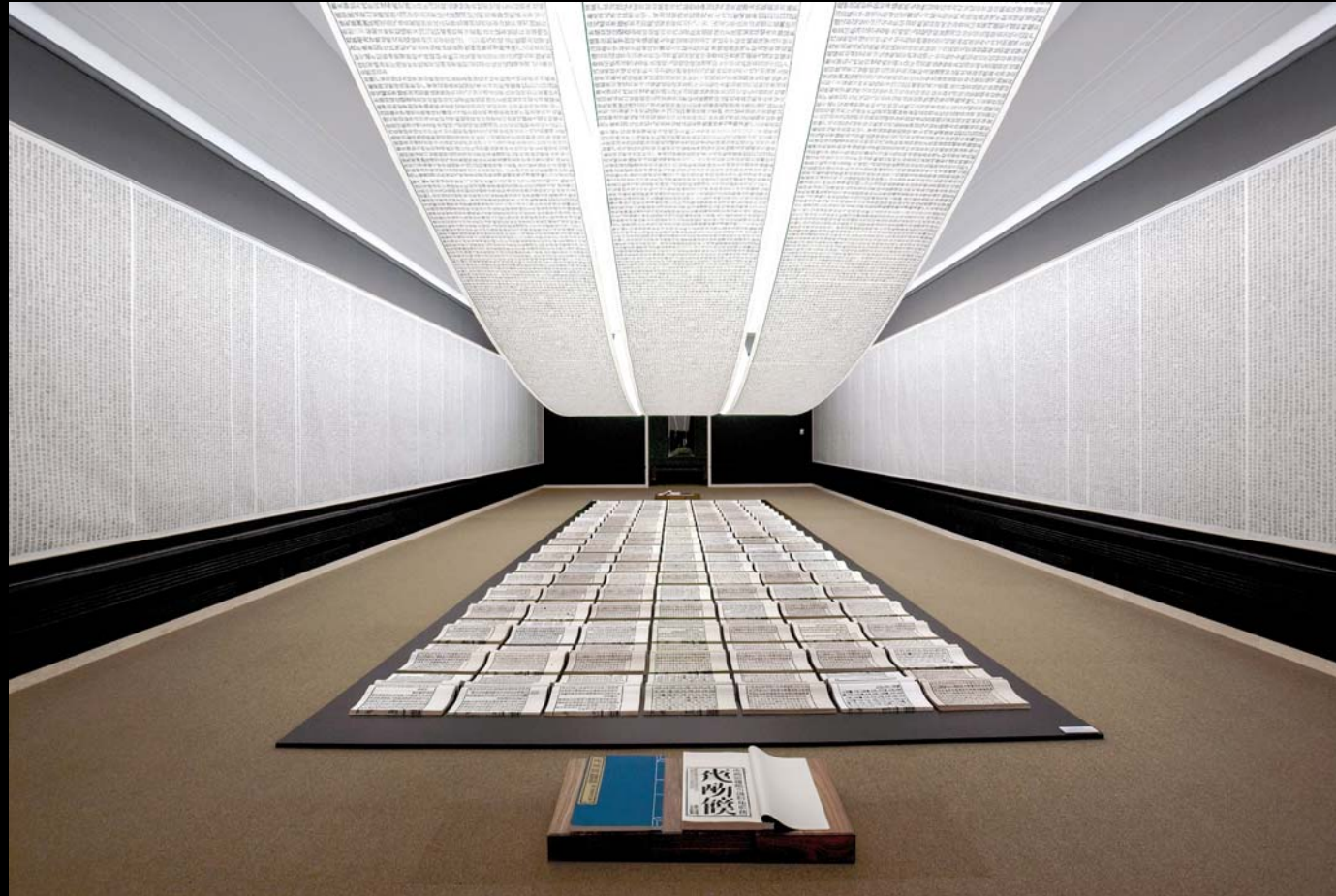


Magdalena Abakanowicz
1985 C.E.

Burlap, resin, wood, nails, and string



229. A Book from the Sky



Xu Bing

1987-1991 C.E.

Mixed media installation

Hand printed books; ceiling and wall scrolls printed from wood letterpress type



each book, open: 18 × 20 inches
 each of three ceiling scrolls 38 inches × c. 115 feet
 each wall scroll 9 feet 2 inches × 39 inches



Theme:
Propaganda
Books
Social Commentary



230. Pink Panther



Jeff Koons
1988 C.E.
Glazed porcelain
41in x 20in x 19in



Theme:
Kitsch/Pop Culture
Ceramic

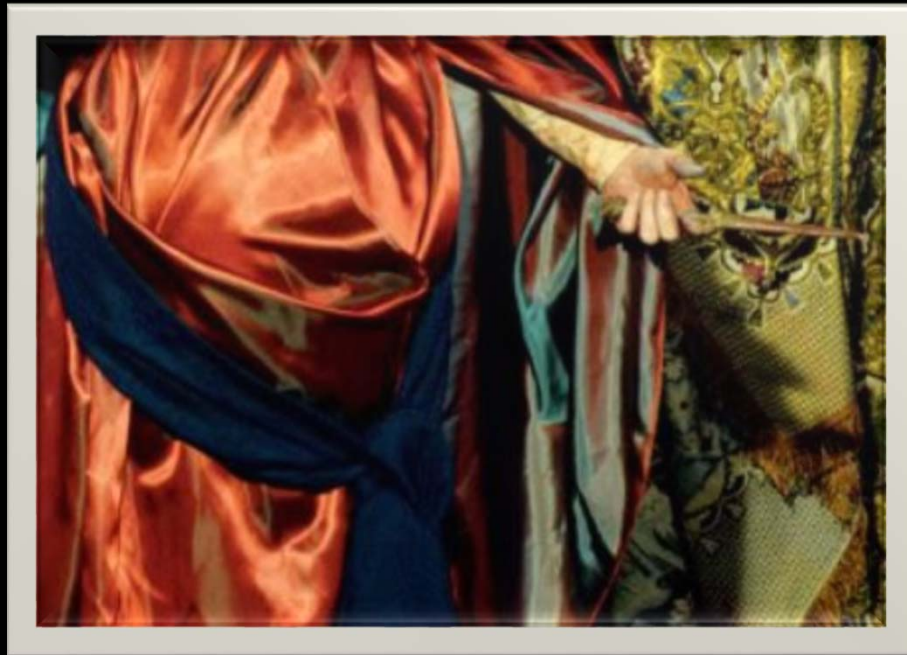


231. Untitled (#228), from the History Portrait series



Cindy Sherman
1990 C.E.
Photograph

6'10 x 4'



Theme:
References to the Past
Feminism





232. Dancing at the Louvre, from the series, The French Collection, Part I; #1



Faith Ringgold

1991 C.E.

Acrylic on canvas, tie-dyed,
pieced fabric border

74in x 80in





Theme:
Fabric Art
Traditional Materials





233. Trade (Gifts for Trading land with White People)



Jaune Quick-to-See-Smith
1992 C.E.
Oil and mixed media on canvas
5ft x 14ft



Theme:
Social Commentary
Multi-Media
European Influences



234. Earth's Creation



Emily Kame Kngwarreye
1994 C.E.
Synthetic polymer paint on canvas
20ft x 9ft





Theme:
Landscape
Nature in art





Venice
BIENNALE

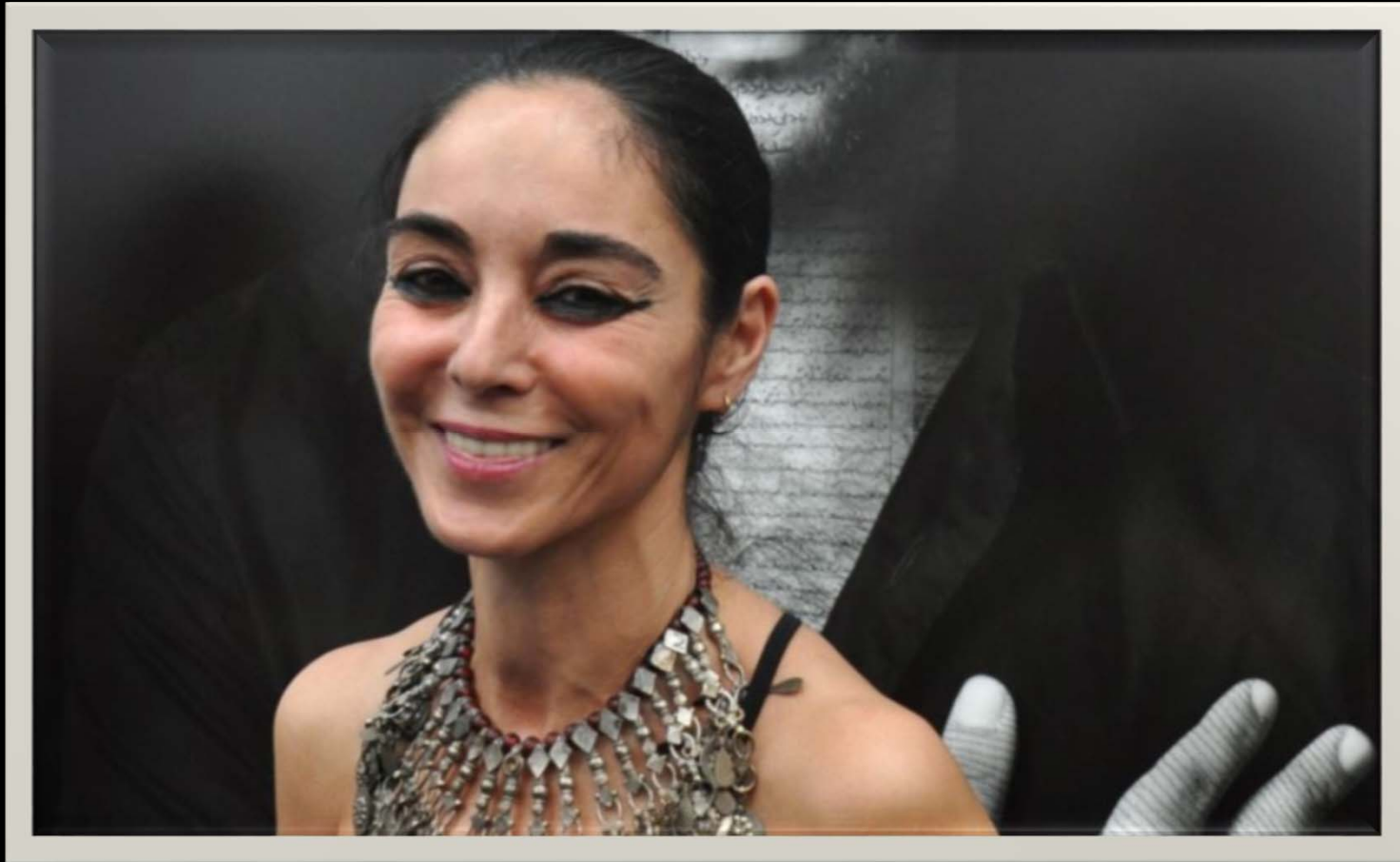
235. Rebellious Silence, from the Women of Allah Series



Shrin Neshat (artist)
Photo by Cynthia Preston
1994 C.E.
Ink on photograph

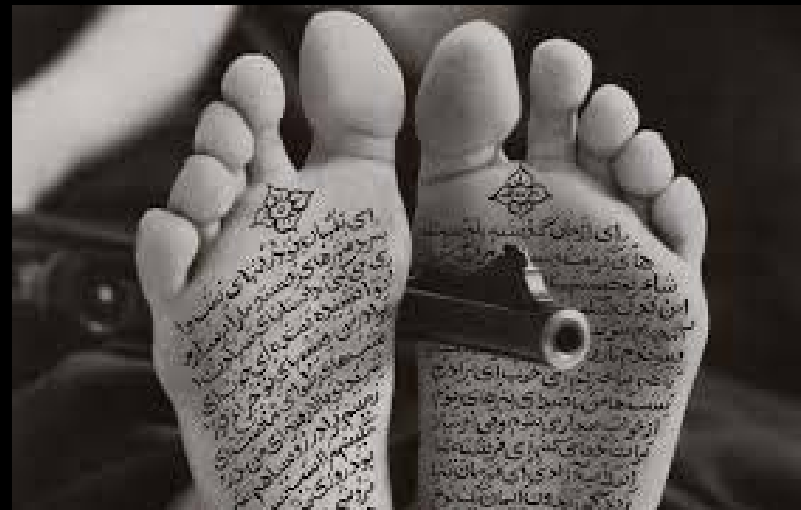
55.9 x 38.6 in



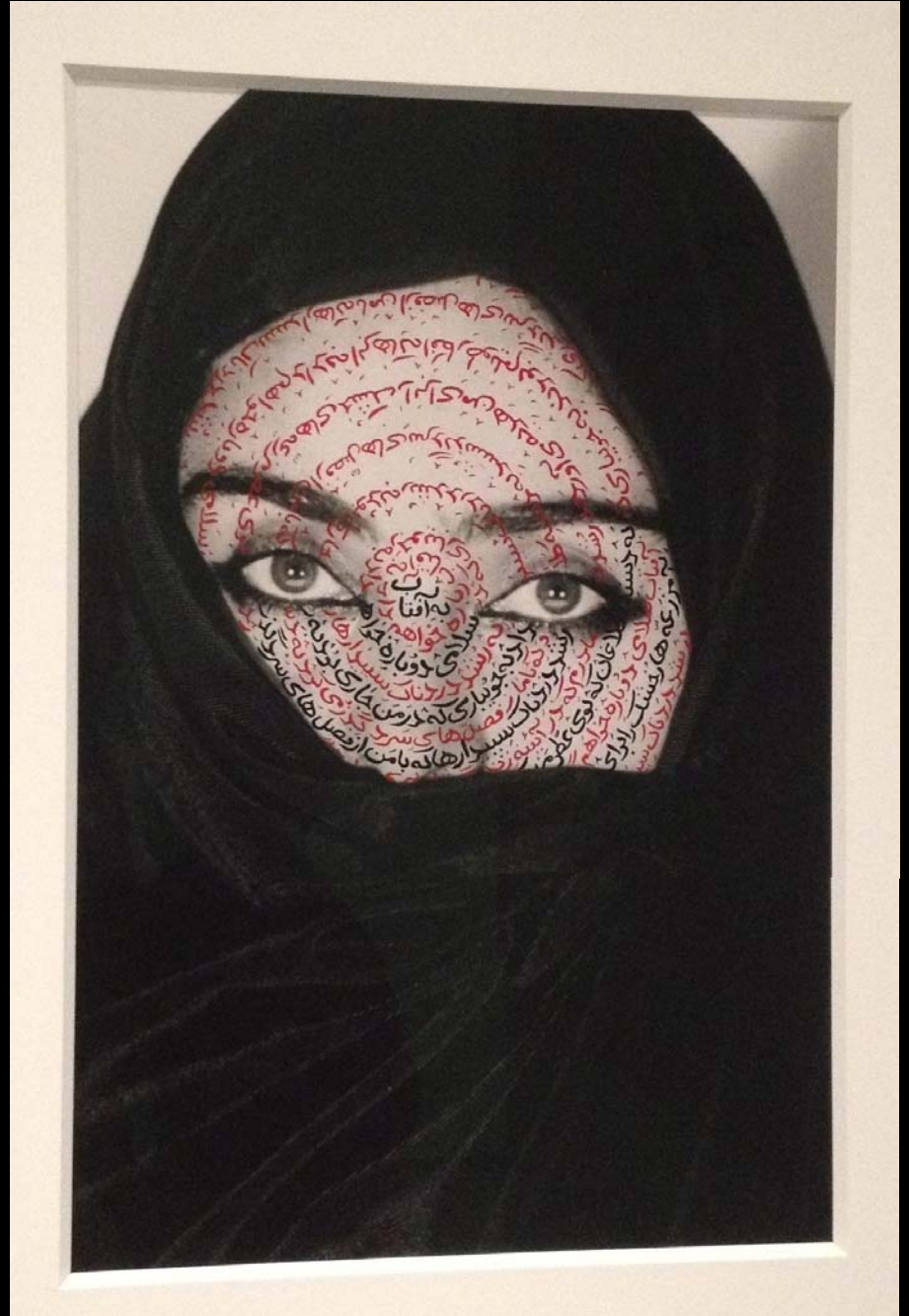


Theme:
Portraits
Ink Techniques

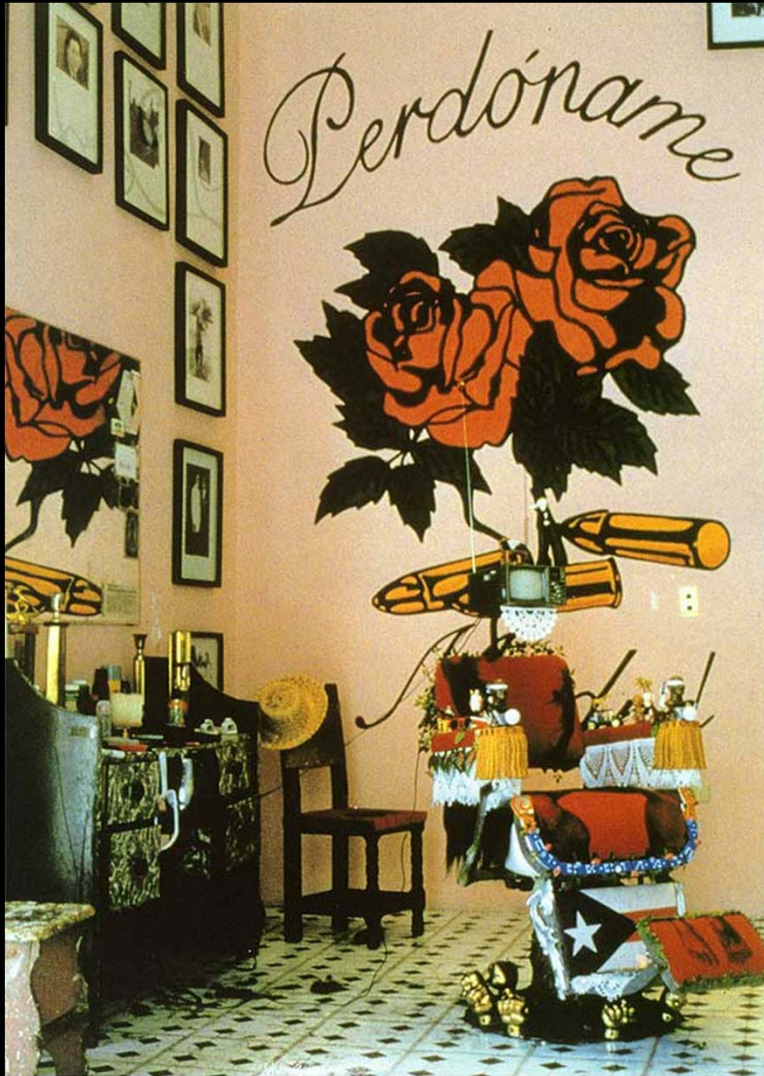








236. En la Barberia no se Lloro (No Crying Allowed in the Barbershop)



Pepon Osorio
1994 C.E.
Mixed-media installation

29' x 25'





Theme:
Kitsch
Societal Conventions





237. Pisupo Lua Afe (Corned Beef 2000)

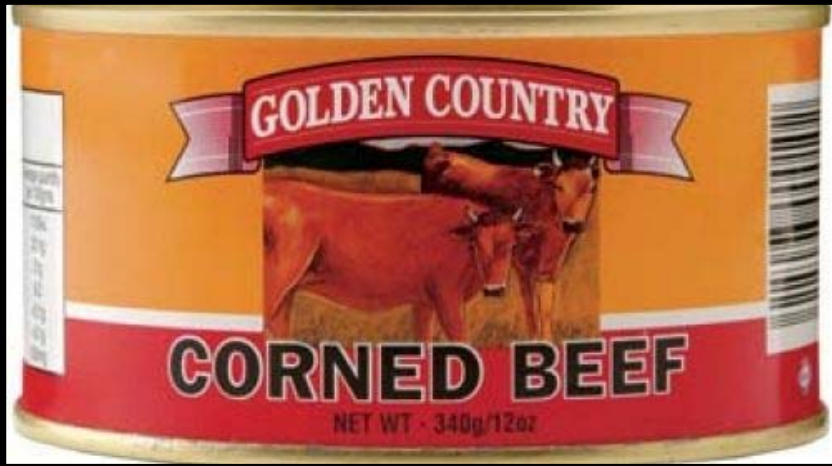


Micheal Tuffery
1994 C.E.
Mixed media

45in x 26in x 86in







Theme:
Social Commentary
Metal Art
Animals in art





238. Electronic Superhighway



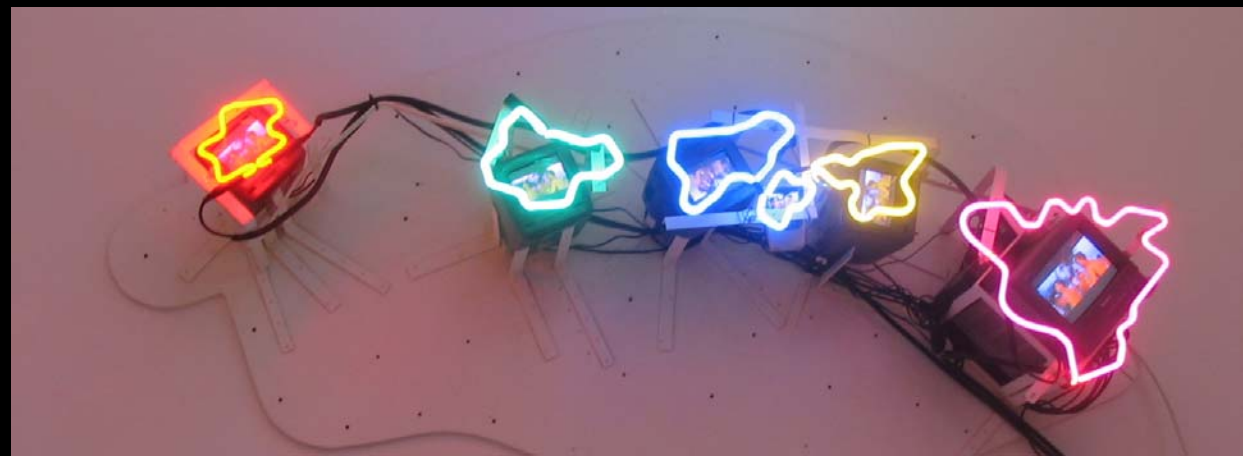
Nam-June Paik
1995 C.E.

Mixed media installation (51-channel closed circuit video
installation, neon, steel, and electronic components)
15 x 40 x 4 feet

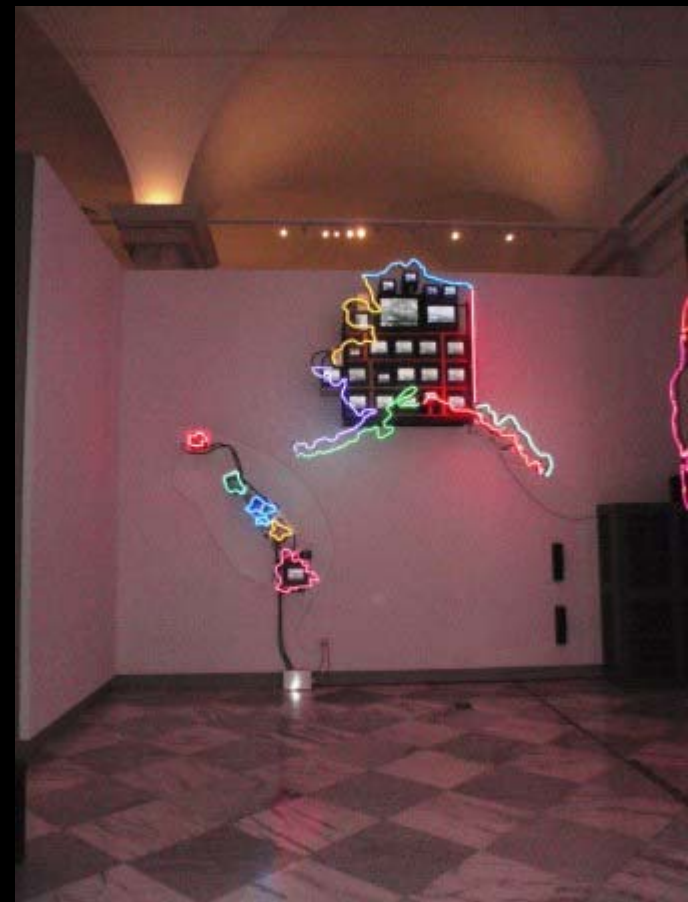
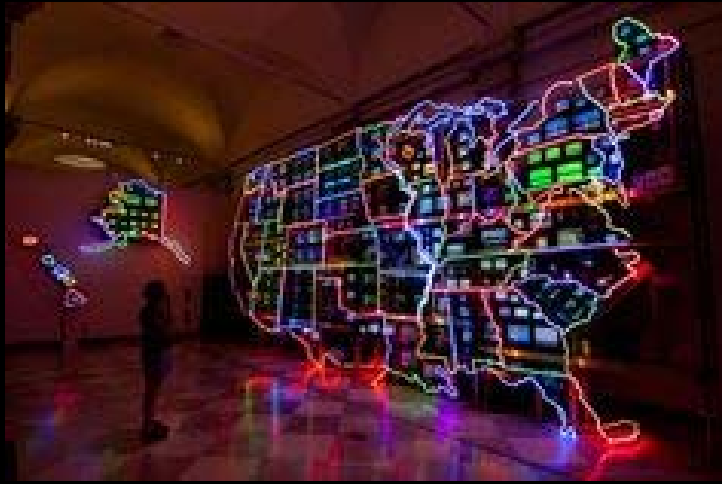




Theme:
Mixed Media
New media for its time







239. The Crossing



Bill Viola

1996 C.E.

Video/sound installation

Room Dimensions

16 feet x 27 feet 6 inches x 57 feet





Theme:
Motion
Opposites

<https://www.youtube.com/watch?v=bg6wW3EOY94>



240. Guggenheim Museum Bilbao

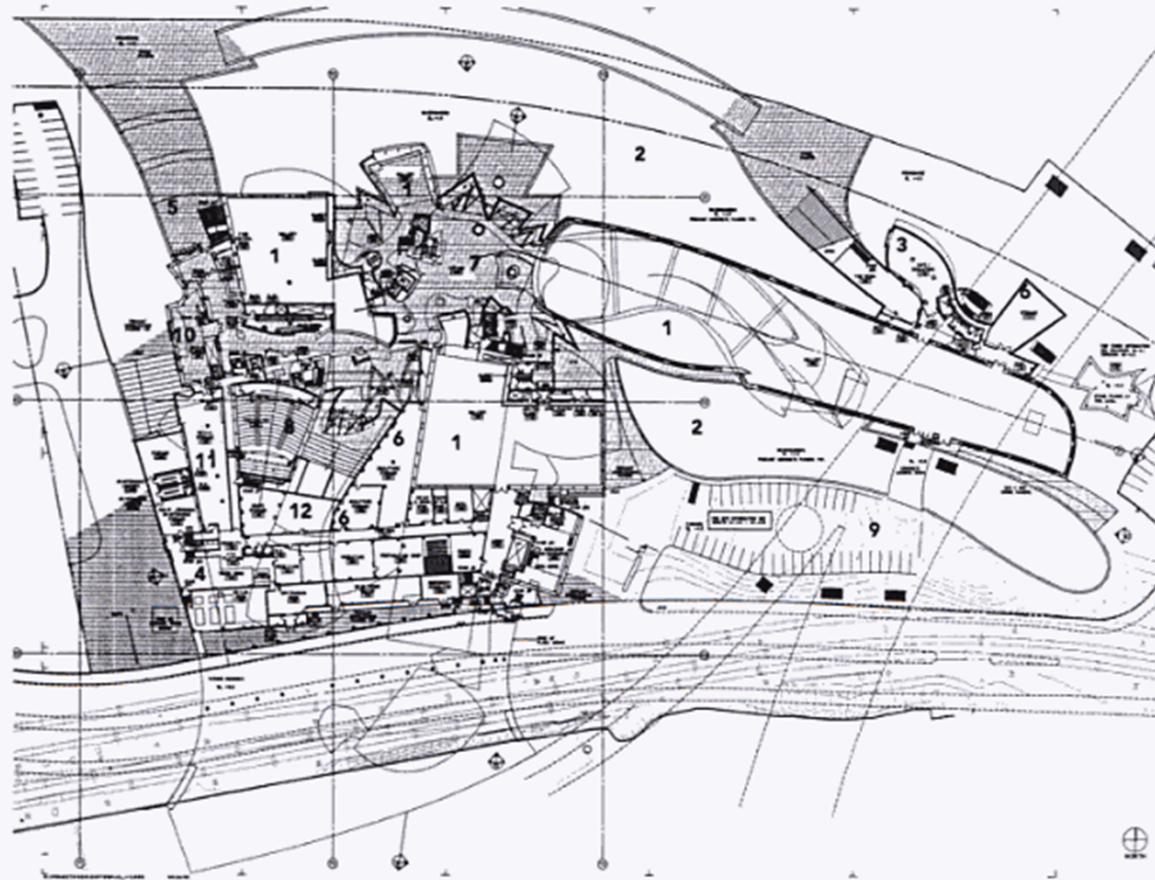


Spain
Frank Gehry (architect)
1997 C.E.
Titanium, glass, and limestone

Guggenheim Museum Bilbao

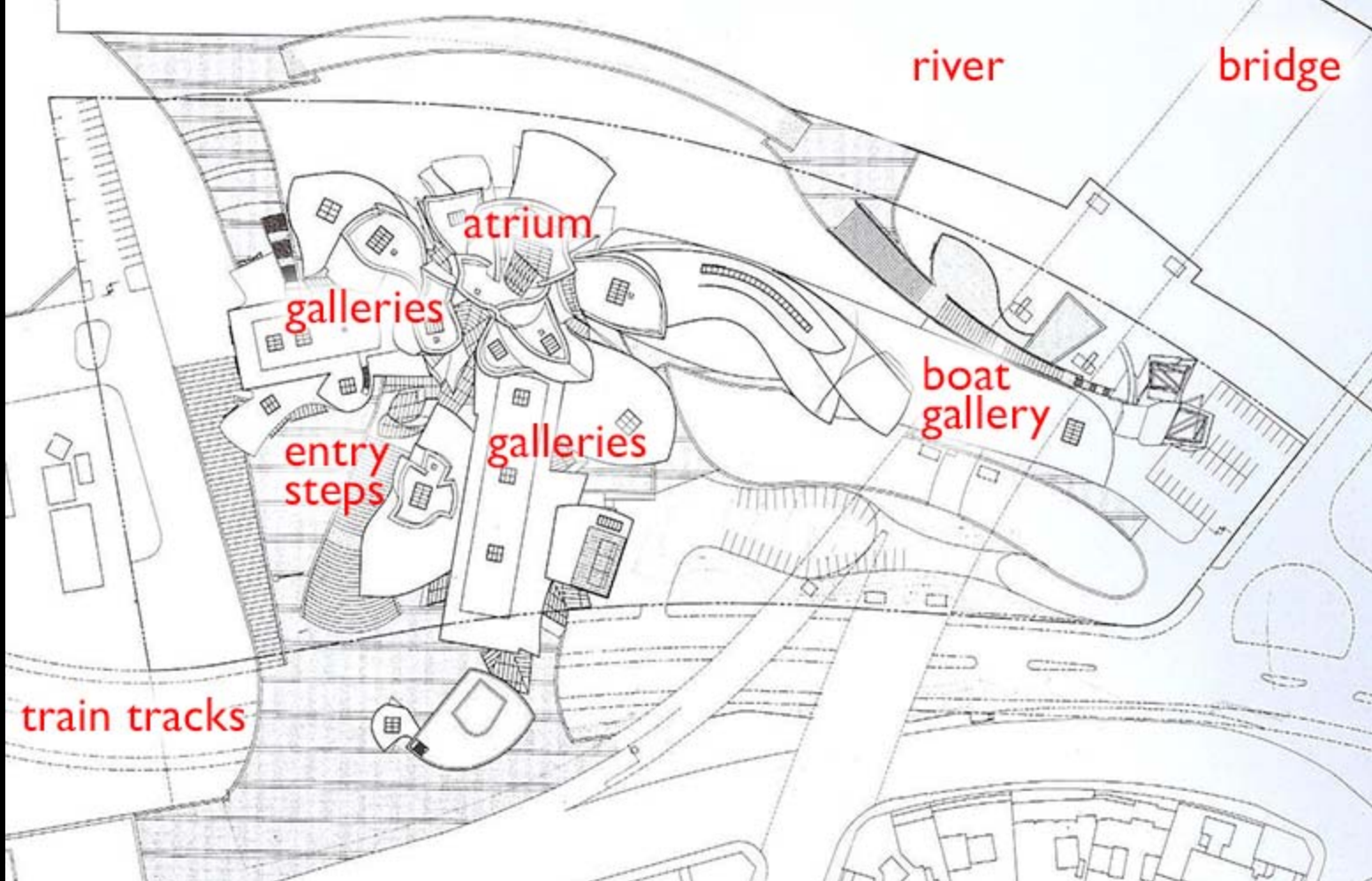
Theme:
Curved Forms
New Media





- First floor plan
- 1 Gallery
 - 2 Water garden
 - 3 Café/bookstore
 - 4 Loading dock/receiving
 - 5 Entry
 - 6 Storage
 - 7 Atrium
 - 8 Auditorium
 - 9 Parking
 - 10 Retail
 - 11 Retail storage
 - 12 Crate storage









241. Pure Land



Mariko Mori

1998 C.E.

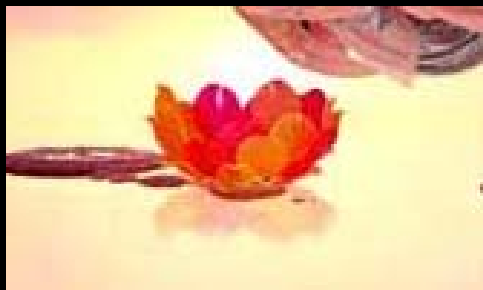
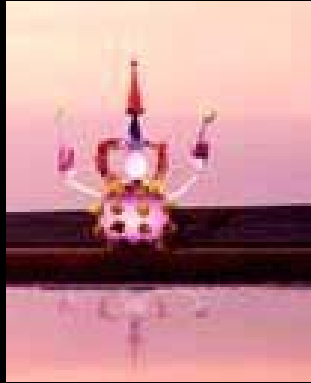
Color Photograph on glass

120in x 240in x 1in





Theme:
Photography
Modern interpretation of traditional forms



242. Lying with the Wolf



Kiki Smith

2001 C.E.

Ink and pencil on paper

88 x 73 inches



Theme:
Animals in art
New uses of traditional media



243. Darkytown Rebellion



Kara Walker

2001 C.E

Cut paper and projection on wall

14.5ft x 37ft







Theme:
Social Commentary
Wall Surfaces



244. The Swing (after Fragonard)



Yinka Shonibare
2001 C.E.
Mixed-media installation
11ft x 11.5ft x 7ft





Theme:
Social Commentary
References to the past
Fabric





245. Old Man's Cloth



El Anatsui

2003 C.E.

Aluminum and copper wire

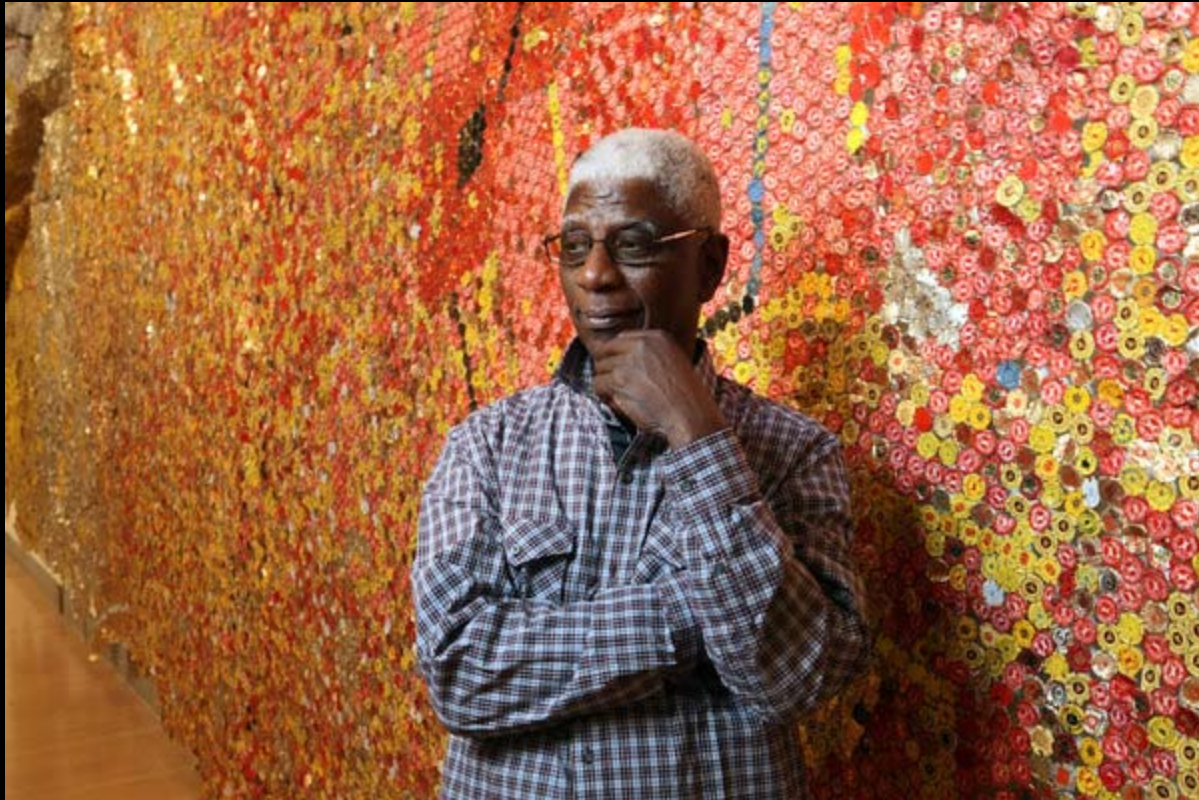
16' x 17' 1"



Theme:
Metal Art
Seriality
Communal Art







246. Stadia II

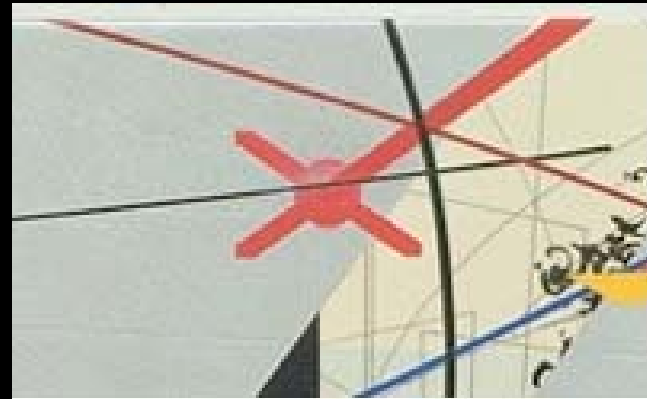


Julie Mehretu
2004 C.E.
Ink and acrylic on canvas
108 x 144 inches



USA

Theme:
Images of entertainment
Abstraction

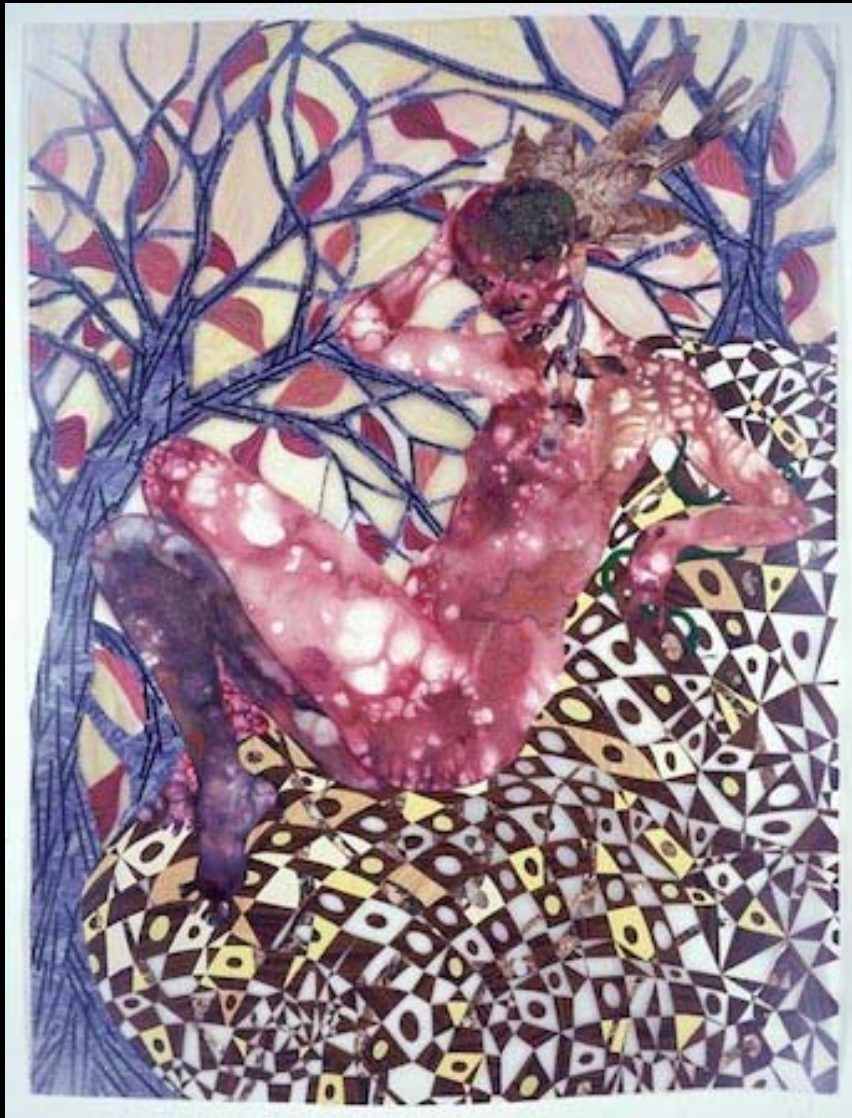


Russia



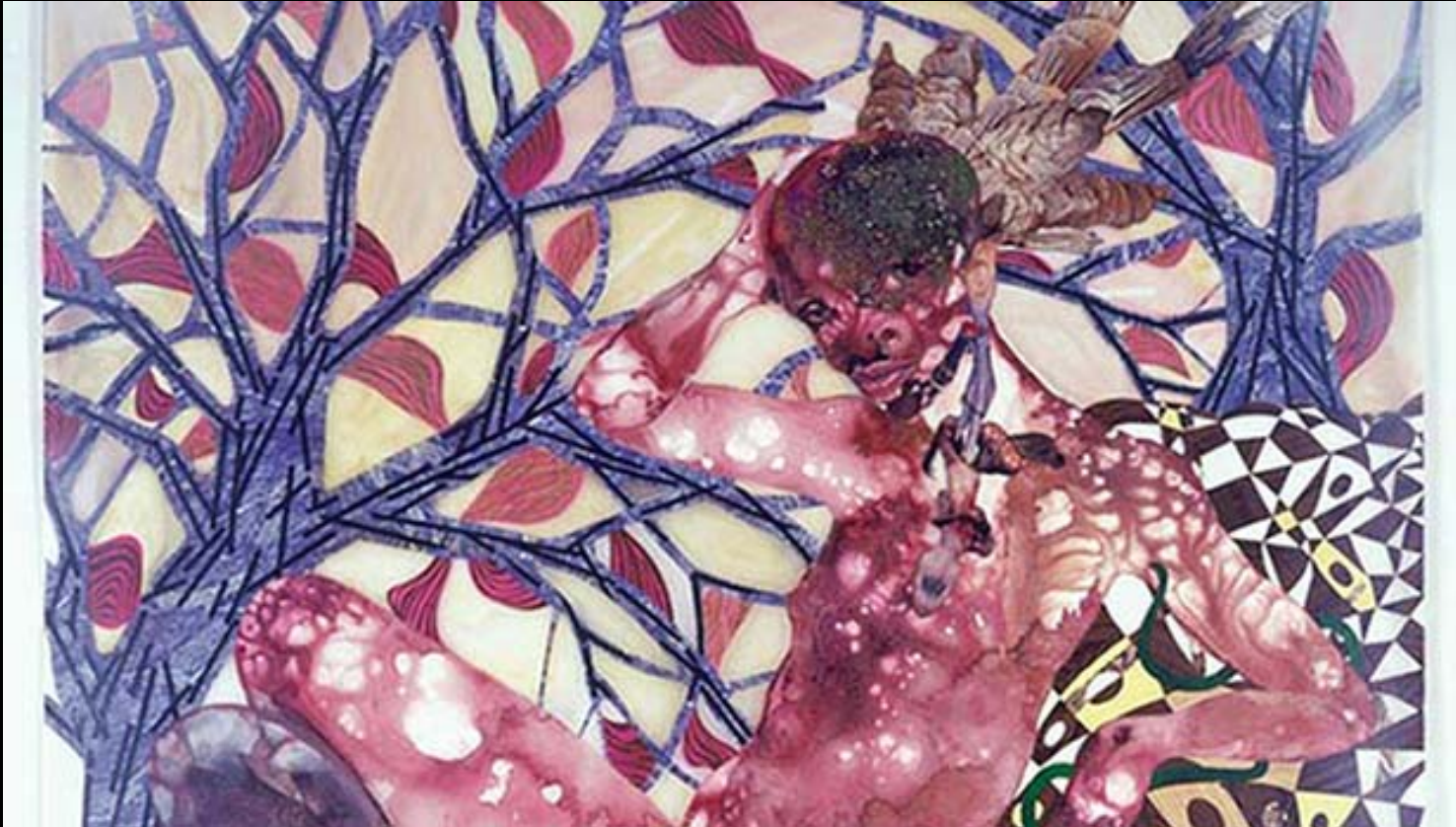
Flags of the World

247 Praying Mantra



Wangechi Mutu
2006 C.E.
Mixed media on Mylar
73.25 x 54.25 in





Theme:
New Media
Women in Art



248. Shibboleth



Doris Salcedo

2007-2008 C.E

Installation

548 feet in length

but its width and depth vary

(changing from a slight opening to several inches wide and up to 2ft in depth).

Shibboleth



Theme:
Social Commentary
Installation
Works on the ground





249. MAXXI National Museum of XXI Century Arts



Rome, Italy

Zaha Hadid (architect)

2009 C.E.

Glass, steel, and cement

MAXXI National Museum of XXI Century Arts



Theme:
Public Spaces



MAXXI National Museum of XXI Century Arts (Extra)









Died
March 31, 2016



Inspirations for the
MAXXI

250. Kui Hua Zi (Sunflower Seeds)



Ai Weiwei
2010-2011 C.E.
Sculpted and painted porcelain



Theme:
Communal Art
Seriality
Social Commentary



